



T.E.A.M. S.E. REGION

AUGUST 2013

www.artteachers.org editor: Terri Clements



PRESIDENTS COMMENTS

AUGUST, HAPPY HOT WEATHER EVERYONE. WHEW.... Dog days of lazy summer, and already families are buying school clothes and supplies. This year is flying by so fast. I hope you have your St. Simons teaching painting selections to Cindy Makowski by now, the dead line is August 15th, so you only have a few days left. It is such an honor to teach at the meeting and I do want to see more of our talented teachers take part. It will also help off set the expense of the meeting costs. Subjects do not have to be on the theme “Under The Big Top,” and a new or different technique is always welcome. We want **original works**, not something that is copyrighted by another artist unless written permission is given by that artist. Our

brochure is put on line on our web site so we want to be clear of any conflicts or problems.

ST. SIMONS ISLAND, GA APRIL 3-7, 2014 Our recent wonderful St. Simons Island meeting still lingers in our minds and we are looking forward to the next year, APRIL 3-7, 2014. Write this date down and try to come. We plan to include more of the photos from this years meeting. Our same able committee members will continue next year with the theme ‘UNDER THE BIG TOP’ and Cindy Makowski is the chair person. Be thinking CIRCUS and plan to attend, it should be very colorful.

BITS OF HISTORY, This month is about June 2005 combined SE Region and the last National conference at ST. Simons Island.

WEBSITE Harold has updated the website and the links to personal art web sites, so if you have anything to correct or add, please contact him. Our thanks to him for the great job he does for us year around.

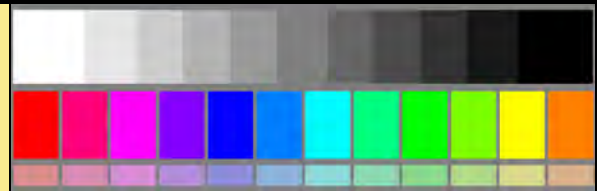
FACEBOOK Mara and Tony are doing a great job of editing and welcoming new artists to our FACEBOOK pages. Thanks to both of them.

For some unknown reason, my JUNO server got a glitch and wiped out emails from June 7 to July 12, so if I missed something anyone sent wishing to include in this newsletter, I am sorry. At least backup saved my data up to that date.



GRAY SCALE

Working with VALUES (shades and tints) of black and white or colors is very helpful in getting contrasts and various shades of shapes and forms. A good practice is to take black, or another very dark color, and white and paint squares of 10 value shades from dark to light. I number them from 0 (black -absence of color) to 10 (white). A gray scale of black and white is used in photography, printing, and in paintings to show subject in dimensions other than just outlines or solid tones. Pre-printed gray scales are available with small holes in each square to hold over a part of a picture or a real subject to match the value of the color as to how light or how dark that color is. Every color whether pastel, bright, color intense, or muted will have a value match to the gray scale. Green and red may have the same value and when painted together may not show contrast.

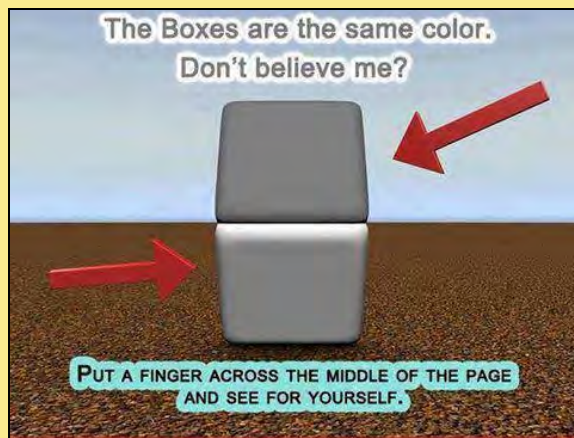


Continued on next page.....

Even a fluorescent color may appear darker on the scale than we perceive. Go around the room laying the scale on everything comparing the value to your gray scale. You may be amazed at the true value of subjects walls, clothes, etc. The way to see the value of subjects is to squint your eyes almost shut to blur the subject, which cuts out details, but shows values and masses. This is especially true of white subjects as shadows and mid tones become very apparent. You may determine that a subject is a #5 value, or a #8 value and then lighten or darken your paint color to that value. You do not have to use white or black, but instead use a lighter or darker color of the same color range, such as yellow in red will lighten the color, but prevents the red from turning pink like white paint does.

Happy painting

Gloria Stegman, TEAM SE Regional Leader.



CAROL EARLE, TEAM WESTERN REGIONAL PRESIDENT IS A WINNER

"Here they are. Horses Best of Show and First place, and Penguins 2nd place. Yaaaaaaa"

Congratulations to Carol on your prize winning paintings. Carol has been a founding member of Team and a Western Regional leader all these years. She has been an active teacher and participant of national conferences and events. She holds workshops at Yosemite National Park as well as regional meetings, and many other painting events. WE are so proud of Her and her accomplishments.



WHO'S WHO IN TEAM SE REGION

President - Gloria Stegman

Vice President - Bonnie Phillips

Treasurer - Frances Walker

Secretary - Diana Marcinka

Auxiliary Officer - Beverly Eckard

TEAM Consultant - Este Rayle

Sunshine Chairperson - Helen Blair

Newsletter Editor - Terri Clements

WEBMASTERS - Smokey Beare, Harold Champagne, Ollie Trawick.

Chairperson for 2014 Regional meeting Cindy Makowski

SE Reg Facebook Administrators -Mara Trumbo & Tony Carchia



WELCOME NEW MEMBER

Diane Ricketson of Crimora , VA

SUNSHINE CORNER

by:
HELEN BLAIR

August Birthday Celebrations:

Joe Collins – August 1, 1929 Celebrate! Celebrate! Celebrate!
Happy Birthday and many more, Joe!! From all of us!!

Este Rayle – 1st – A big happy Birthday to you, too!!!
Doug Browne (Judy’s husband) – 2nd
Bonnie Phillips – 22nd
Richard Phillips – 22nd - Bonnie’s husband
Kathleen Camara – 26th
Janice Timmins – 28th
Judy Browne – 29th

August Anniversary Celebrations:

Anne/Wayne Robinson – August 11, 1968
Cindy/Walter Markowski – 12th
Bev/Miles Eckard – Aug 16, 1959
Helen/Doug Blair – Aug 19, 1961
Pat/Joe Appling – 20th
Linda/Marvin Cash – Aug 20, 1966
Terri/Paul Clements—Aug. 21, 1983



To all that have had unfortunate bouts with health situations – we send our best wishes and our prayers to you for a quick and healthy recovery.

SE Region Members:

Shirley Chipman to have knee surgery soon. We send our wishes for you to be back to your active schedule in no time at all!

Beverly Eckard has been struggling with health issues and in and out of the hospital.

Our prayers and wishes she is able to overcome and return to good health.



September Birthday Celebrations:

Diane Davis – 1st
Peggy Brown – 2nd
Tony Carchia – 6th
Mary Moebius – 8th – (Frank’s wife)
Karolyn Hawthorne 8th
Frank Moebius – 16th
Sylvia Wilkinson – 18th
Emogene Wallace – 24th
Nicole Ranes – 26th



It’s really remarkable what is in
A pot, a kettle, a plate of tin,
For the hand that works with a heart that sings
Finds many a tune in the commonest things.
~Douglas Mallock

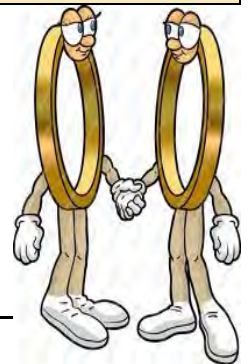
September Anniversary Celebrations:

Este/Bill Rayle – Sept 1, 1950 –
*Congratulations!!!

Have the best Anniversary

ever!!!!

Peggy/Ron Brown – 7th
Sylvia/Stan Wilkinson – 18th



Circle of Concern:





TEACHERS: SUBMISSION REQUEST FOR ST. SIMON MEETING

Send in the clowns - oops I mean the TEACHERS ! There are less than 3 weeks left to get your submissions in to the planning committee. The deadline is August 15th. The planning committee will be meeting shortly after that and we will be notifying all of the teachers by the first week of September.

All teachers are encouraged to send in submissions of 3 hour or 6 hour classes. Please keep in mind we do keep a tight schedule so all classes should be able to be completed in less than 3 or 6 hours leaving everyone time to put on their finishing touches and have one on one time with you as needed. Teachers are paid at \$75 for a 3 hour class and \$150 for a 6 hour class plus you are reimbursed at \$15 per student for canvas or other ground preparation.

All we need today is a picture of the painting you would like to teach, the medium and the length of class time. The actual teaching packet will not be required until you are notified in September that your project is approved.

Don't delay, get that photo to me today !

You can send snail mail to : Cindy Makowski: 6 East Park Ave, St. Augustine, Fl. 32084 or cindymak32084@hotmail.com or call me in the EVENINGS at 904-501-4432.

Cindy Makowski Chairperson, Planning Committee



A BIT OF HISTORY, ST. SIMON NATIONAL CONFERENCE 2005

This was our last TEAM **National** Conference. Our regions carried on after that and are doing a commendable job, thanks to our strong great leaders. TEAM is alive and well. The year of 2005 we had cancelled our regular SE regional Spring meeting and combined our regional with the national conference in June 2005. Our planning committee was Tony and Tina Carchia and Debbie Huffman. Because this was a national conference, we had members from all over USA as well as regional leaders from other regions. We had representatives from Langnickel Brush company and Miameri Paint company. Artist Dominic Vignola , did a demo of his old masters style of painting called Tonal Impressionism. We had a large variety of classes and many teachers including Norma Poulos , Valerie Stewart and Brenda Harris.



For Hillbilly style dress up night, Tony had constructed a cardboard outhouse and sculpture. We attended in Hillbilly patched overalls and mountain dress as well fashions of Southern Belles in beautiful dresses. Karaoke singing rounded out the night of



crazy fun and laughs. Tony and Tina Carchia's Hillbilly entertainment as always, was so funny and a blast. Everyone received a small wooden outhouse made and painted by Tina as a souvenir to remember this event. In our business meeting, I received a surprise



tribute with a banner sash and many ribbons for my years of presidency, and all received a campaign style button with my photo on it. At this meeting, The photos for our SE Regional photo directory was taken by Karolyn Hawthorn, Harold Champagne, and myself and Harold put it all together and posted it on line with member access only. The foundation for the website was also discussed and formulated. So much was accomplished. By Gloria ([click here for more photos](#))



HOW MANY FACES DO YOU RECOGNIZE FROM 2005?



